

The logo for Sweetwater Veterinary Clinic features a dark blue background with a lighter blue wavy line at the top. The text "Sweetwater Veterinary Clinic" is centered in a light blue, sans-serif font.

## Sweetwater Veterinary Clinic

The logo for Equine Hospital Referral features a dark blue background with a lighter blue wavy line at the top. The text "Equine Hospital Referral" is centered in a light blue, sans-serif font.

## Equine Hospital Referral

- Why to do it?
- When to do it?
- Advantages of hospital referral
- Concerns with hospital referral
- Things to pursue to avoid need for hospital referral

**Why take a horse  
to an Equine Hospital?**

## Common reasons for referral

- Severe and/or persistent colic
- Severe/joint compromising lacerations
- Unresolved lameness issues
- Unresolved medical issues

What an Equine Hospital can offer  
that ambulatory practice can not

# Surgical Facilities









Larger Radiographic Machine



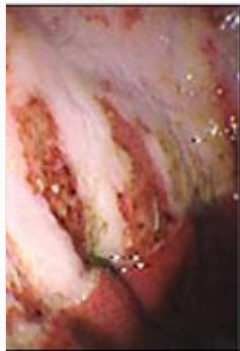
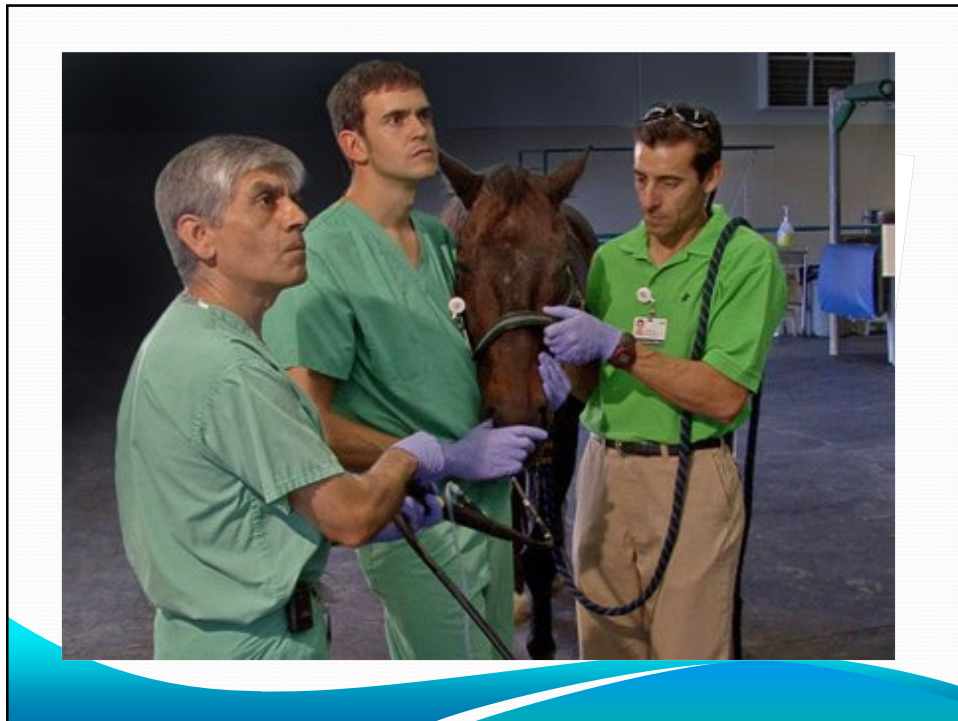


## 24 Hour Care

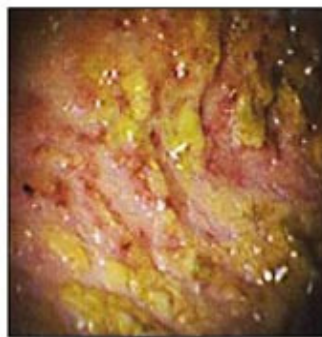
### Advanced Diagnostic Equipment

- Endoscopy/Gastroscopy
- Advanced Ultrasound
- Computerized Tomography
- Magnetic Resonance Imaging





Erosions

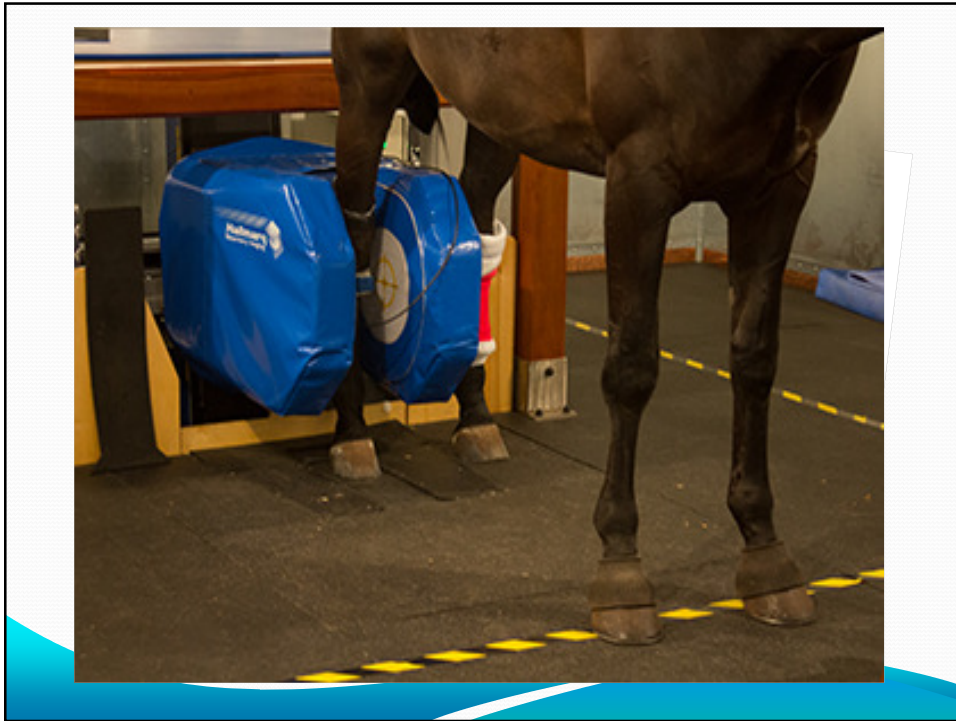


Severe Erosions



Bleeding Ulcers





## Advanced Medical Therapy

- Continuous Monitoring
- Continuous Intravenous Fluid Therapy
- Specialized Stall Confinement
- Pool Therapy
- Hyperbaric Therapy
- Regenerative Therapy









When to consider hospital referral?

## Colic

- If colic pain is worsening over time
- If colic pain is persisting over time
- If it appears that horse will need longer term intravenous fluids to recover from medical colic
- If horse has a history of severe colic
- If more aggressive monitoring is needed

## Laceration

- If strong concern that a joint is compromised
- If strong concern that the chest or abdomen is compromised by laceration
- Severe corneal laceration

## Persistent Lameness

- With a competition horse where owner hopes to continue a higher level of performance

## Non-Resolving Medical Issue

- Where a medical issue is not resolving and needs more aggressive diagnostics, especially if the animal's quality of life is of concern

## Ability to Refer is based on

- Economics
- Age of horse
- Value of horse
- Personal sentiment
- Most colic surgery is not performed due to the value of the horse

## Ideas to Avoid Hospital Referral

- Excellent preventative medical care
- Colic prevention
- Safe environment
- Safe exercise program



## Questions/Comments

## Thank you to

- 1) Everybody at Sweetwater Veterinary Clinic
- 2) Acton Agua Dulce Library and staff
- 3) Acton Town Council
- 4) Los Angeles County Board of Supervisors
- 5) Friends of Acton / Agua Dulce Library